



ВЫСОКИЙ ПОЛЕТ

Специальный выпуск / Special issue

Путеводитель по Москве
/ Moscow Guide



ПУТЕВОДИТЕЛЬ ПО МОСКВЕ / MOSCOW GUIDE

Редакция журнала «Высокий Полет» выпускает гид по Москве на английском и китайском языках.

Москва всегда привлекала туристов со всего мира и российских регионов. В последнее время все больше китайских туристов посещают Москву. Для них представляют интерес московские достопримечательности, а также магазины и бутики, продающие товары категории «люкс». Эти магазины также привлекают приезжих из ряда регионов России.

Все эти приезжие прибывают в Москву, пользуясь услугами российских и китайских авиаперевозчиков. Редакция «Высокого Полета», используя богатый опыт в создании журналов для авиапассажиров, а также партнерские отношения с российскими и китайскими авиакомпаниями предлагает новый продукт: Гид-путеводитель по Москве на русском и китайском языках.

Гид содержит полезную информацию о магазинах и торговых центрах, предлагающих товары категории «люкс», ресторанах русской и китайской кухни, основных достопримечательностях, а также подробную двуязычную карту Москвы и московского метрополитена.

Гид распространяется среди гостей лучших отелей Москвы.

Publishers of Perfect Flight Magazine present Moscow Guide on English and Chinese.

Moscow always attracts foreign tourists from all over the world and Russians from regions. Last years more and more Chinese tourists visit Moscow. They are interested in Moscow tourist attractions as well as shops and boutiques selling luxury brands. These shops attract also Russian visitors from several regions.

All these visitors are arriving to Moscow using Russian and Chinese airlines. The publishers of Perfect Flight Magazine with their huge expertise in making magazines for air passengers as well as partnership with Russian and Chinese airlines propose new product: Moscow Guide in Russian and Chinese.

The Guide contains useful information on shops and shopping centers offering luxury brands items, restaurants on Russian and Chinese cuisine, major Moscow tourist attractions, two-language Moscow Map and Moscow Metro Scheme. The Guide will be distributed in the best Moscow hotels.

Audemars Piguet

爱彼专卖店位于古姆第一条线。这是所谓的Vallée de Joux, 来这里您会感到真实的瑞士Le Brassus的气氛。专卖店的风格与建筑风格无可匹敌的构思和品质独立精神。Audemars Piguet 把三个重点作为基础, 就是工厂的历史, 艺术和个别材料每个客户。
地址: 莫斯科, 红场, 3号
古姆 (GUM), 1号线



AUDEMARS PIGUET, GUM, 1 line, 1 floor, Red Square, 3, Moscow, +7 495 620 34 46

AUDEMARS PIGUET, Watches&Jewelry, Red Square, 3, GUM, 1 line, 1 floor. Metro «Okhotny Ryad». Tel.: +7 (495) 620-3446

BREGUET, Watches&Jewelry, Red Square, 3, GUM, 1 line, 1 floor. Metro «Okhotny Ryad». Tel.: +7 (495) 915-8395

BULGARİ, Watches & Jewelry, Red Square, 3, GUM, 2-3 line, 1 floor. Metro «Okhotny Ryad». Tel.: +7 (495) 780-3834

CARTIER, Watches&Jewelry, Red Square, 3, GUM, 1 line, 1 floor. Metro «Okhotny Ryad». Tel.: +7 (495) 795-0340

CHAUMET, Watches & Jewelry, Red Square, 3, GUM, 1 line, 1 floor. Metro «Okhotny Ryad». Tel.: +7 (495) 620-3022

DE BEERS, Watches & Jewelry, Red Square, 3, GUM, 2 line, 1 floor. Metro «Okhotny Ryad». Tel.: +7 (495) 620-3051

爱彼 (手表/珠宝)
地址: 红场, 3号, 古姆 (GUM) 1线, 1楼(俄人商行地铁站) 电话号码: +7 (495) 620-3446

百里鸣牌 (手表/珠宝)
地址: 红场, 3号, 古姆 (GUM) 1线, 1楼(俄人商行地铁站) 电话号码: +7 (495) 915-8395

布尔加里 (手表/珠宝)
地址: 红场, 3号, 古姆 (GUM) 2-3线, 1楼(俄人商行地铁站) 电话号码: +7 (495) 780-3834

卡地亚 (手表/珠宝)
地址: 红场, 3号, 古姆 (GUM) 1线, 1楼(俄人商行地铁站) 电话号码: +7 (495) 795-0340

尚美巴黎 (手表/珠宝)
地址: 红场, 3号, 古姆 (GUM) 1线, 1楼(俄人商行地铁站) 电话号码: +7 (495) 620-3022

戴·比尔斯 (手表/珠宝)
地址: 红场, 3号, 古姆 (GUM) 2线, 1楼(俄人商行地铁站) 电话号码: +7 (495) 620-3051



Cartier
Cartier 专卖店里有珠宝制品, 手表, 手提包, 袖扣, 打火机, 照片框等等。
地址: 莫斯科, 红场, 3号
古姆 (GUM), 1号线
电话号码: +7 (495) 795-03-40

CARTIER, GUM, 1 line, 1 floor, Red Square 3, Moscow, +7 (495) 795-03-40

12

Spring-Summer 2017 • 春夏2017

DIOR, Accessories, Watches&Jewelry, Red Square, 3, GUM, 1 line, 1 floor. Tel.: +7 (495) 620-3161.

H.STERN, Watches & Jewelry, Red Square, 3, GUM, 3 line, 1 floor. Metro «Okhotny Ryad». Tel.: +7 (495) 620-3295

FREYWILLE, Watches&Jewelry, Red Square, 3, GUM, 3 line, 1 floor. Metro «Okhotny Ryad». Tel.: +7 (495) 620-3272

MONTBLANC, Watches, Writing Instruments, Leather Goods, Jewelry, Accessories. Red Square, 3, GUM, 1 line, 1 floor. Metro «Okhotny Ryad». Tel.: +7 (495) 514-0088

OMEGA, Watches & Jewelry, Red Square, 3, GUM, 2 line, 1-2 floor. Metro «Okhotny Ryad». Tel.: +7 (495) 620-3119

Vacheron Constantin

2015年, 在Vacheron Constantin 260周年纪念日子里, 第一家俄罗斯Vacheron Constantin 专卖店在莫斯科市中心开业。位于克林姆林对面, 红场的GUM购物中心, 温暖的35平米小屋装点着各式高档名品, 不仅使莫斯科收藏家们流连忘返, 更是游客们的绝佳去处。
地址: 莫斯科, 红场, 3号
古姆, 1线
电话号码: +7-495-981-17-55

VACHERON CONSTANTIN, GUM, 1 line, 1 floor, Red Square, 3, Moscow, +7 (495) 981-1755

迪奥 (女衣服/附件/手表/珠宝) 地址: 红场, 3号, 古姆 1线, 1楼(俄人商行地铁站) 电话号码: +7 (495) 620-3051
汉斯·史登 (手表/珠宝)
地址: 红场, 3号, 古姆 (GUM) 3线, 1楼(俄人商行地铁站) 电话号码: +7 (495) 620-3161

手表/珠宝
地址: 红场, 3号, 古姆 (GUM) 3线, 1楼(俄人商行地铁站) 电话号码: +7 (495) 620-3272

万宝龙 (手表/文具/皮件/珠宝/附件)
地址: 红场, 3号, 古姆 (GUM) 1线, 1-2楼(俄人商行地铁站) 电话号码: +7 (495) 514-0088

欧米加 (手表/珠宝)
地址: 红场, 3号, 古姆 (GUM) 2线, 2楼(俄人商行地铁站) 电话号码: +7 (495) 620-3119



PIAGET, Watches & Jewelry, Red Square, 3, GUM, 1 line, 1 floor. Metro «Okhotny Ryad». Tel.: +7 (495) 662-7577

SUBLIME BY BOSCO, Watches & Jewelry, Red Square, 3, GUM, 1-3 line, 1 floor. Metro «Okhotny Ryad». Tel.: +7 (495) 620-3311

TIFFANY & CO, Watches & Jewelry, Red Square, 3, GUM, 2-3 line, 1-2 floor. Metro «Okhotny Ryad». Tel.: +7 (495) 915-8878

TISSOT, Watches & Jewelry, Red Square, 3, GUM, 3 line, 1 floor. Metro «Okhotny Ryad». Tel.: +7 (495) 543-9059

伯爵 (手表/珠宝)
地址: 红场, 3号, 古姆 (GUM) 1线, 1楼(俄人商行地铁站) 电话号码: +7 (495) 662-7577

手表/珠宝
地址: 红场, 3号, 古姆 (GUM) 1-3线, 1楼(俄人商行地铁站) 电话号码: +7 (495) 620-3311

蒂芙尼 (手表/珠宝)
地址: 红场, 3号, 古姆 (GUM) 2-3线, 1-2楼(俄人商行地铁站) 电话号码: +7 (495) 915-8878

天梭 (手表/珠宝)
地址: 红场, 3号, 古姆 (GUM) 3线, 1楼(俄人商行地铁站) 电话号码: +7 (495) 543-9059

Spring-Summer 2017 • 春夏2017

13

Vacheron Constantin

第一家Vacheron Constantin 莫斯科时尚精品店位于莫斯科的历史中心, 彼得罗夫卡街5号的柏林之家中。352平方米的门店中尽展精品, 透露精致的橱窗里珍珑错落, 都欢迎顾客的到来。两个楼层中, 设有两个VIP房和明亮宽敞的独立空间, 为您提供舒适的私人氛围, 让您体会皇家贵族和收藏家的独到眼光, 带您步入最真实的奢华之境。
地址: 莫斯科, 彼得罗夫卡街, 5号, "Berlinsky Dom"
电话号码: +7-495-937-90-41



VACHERON CONSTANTIN, Ul. Petrovka, 5, Metro «Kuznetsky Most», Moscow, +7 (495) 937-9041

BOUCHERON, Jewelry, Ul. Petrovka, 11, Hotel Marriott Royal Aurora. Metro «Kuznetsky Most». Tel.: +7 (495) 663-8858. Daily from 10 am to 9 pm.

BURBERRY, Women, Men, Accessories. Ul. Petrovka, 16. Metro «Kuznetsky Most». Tel.: +7 (495) 951-9545. Daily from 10 am to 9 pm.

BVLGARİ, Watches & Jewelry, Accessories. Ul. Kuznetsky Most, 7, Metro «Kuznetsky Most». Tel.: +7 (495) 775-2220. Daily from 10 am to 10 pm.

CARTIER, Watches & Jewelry, Accessories. Ul. Petrovka, 5, Metro «Kuznetsky Most». Tel.: +7 (495) 510-5060. Daily from 10 am to 9 pm.

CHANEL, Footwear, Accessories. Ul. Petrovka, 2, TSUM. Metro «Kuznetsky Most». Tel.: +7 (495) 785-8595. Daily from 10 am to 10 pm.

布舍龙 (珠宝) 地址: 彼得罗夫卡街, 11 ("Marriott Royal Aurora" 酒店, "库兹涅茨克桥" 地铁站) 营业时间: 每天10: 00-21: 00 电话号码: +7 (495) 663-8858.

巴宝莉 (男女衣服/附件) 地址: 彼得罗夫卡街, 16 ("库兹涅茨克桥" 地铁站) 营业时间: 每天10: 00-21: 00 电话号码: +7 (495) 951-9545

宝格丽 (手表/珠宝/附件) 地址: 库兹涅茨克桥路, 7 ("库兹涅茨克桥" 地铁站) 营业时间: 每天10: 00-22: 00 电话号码: +7 (495) 775-2220

卡地亚 (手表/珠宝/附件) 地址: 彼得罗夫卡街, 5 ("库兹涅茨克桥" 地铁站) 营业时间: 每天10: 00-21: 00 电话号码: +7 (495) 510-5060

香奈儿 (鞋类/附件) 地址: 彼得罗夫卡街, 2 (TSUM "库兹涅茨克桥" 地铁站) 营业时间: 每天10: 00-22: 00 电话号码: +7 (495) 775-8595



Cartier
Cartier专卖店里有珠宝制品, 手表, 手提包, 袖扣, 打火机, 照片框等等。Cartier专家会帮您进行维修服务。
地址: 莫斯科, 彼得罗夫卡, 5号
电话号码: +7 (495) 510-50-60

CARTIER, Ul. Petrovka, 5, Metro «Kuznetsky Most», Moscow, +7 (495) 510-5060

22

Spring-Summer 2017 • 春夏2017

Bulgari

在古姆 (GUM), 由著名建筑师Peter Marino设计的空格外 (BVLGARİ) 新店正式开幕以后, 2016年3月又揭幕了一家宝格丽专卖店。进入BVLGARİ专卖店, 就像进入古代意大利宫殿。在专卖店入口处的中心可以看到很美丽的景色, 又传统经典的又现代的罗马, 生动演绎了宝格丽这一明珠收藏匠的恒久魅力, 让您尊贵自由开放。购买后可以拿到珍贵的小礼物。
地址: 莫斯科, 库兹涅茨克桥路, 7
电话号码: +7 495 775 22 20



BVLGARİ, Ul. Kuznetsky Most, 7, Metro «Kuznetsky Most», Moscow, +7 (495) 775-2220

IWC, Watches, Ul. Petrovka, 5, Metro «Kuznetsky Most». Tel.: +7 (495) 660-1868. Daily from 10 am to 9 pm.

GUCCI, Women, Men, Accessories. Ul. Petrovka, 16. Metro «Kuznetsky Most». Tel.: +7 (495) 785-5665. Daily from 10 am to 9 pm.

LITZ COLLECTION, Women, Men, Accessories. Ul. Petrovka, 15/13, strl. Metro «Kuznetsky Most». Tel.: +7 (495) 625-5476. Daily from 10 am to 10 pm.

OMEGA, Watches & Jewelry, Ul. Kuznetsky Most, 7, Metro «Kuznetsky Most». Tel.: +7 (495) 933-2808. Daily from 10 am to 10 pm.

PANERAI, Watches, Ul. Petrovka, 5, Metro «Kuznetsky Most». Tel.: +7 (495) 662-7576. Daily from 10 am to 9 pm.

万国表 (手表) 地址: 彼得罗夫卡街, 5 ("库兹涅茨克桥" 地铁站) 营业时间: 每天10: 00-21: 00 电话号码: +7 (495) 660-1868.

古驰 (男女衣服/附件)
地址: 彼得罗夫卡街, 16 ("库兹涅茨克桥" 地铁站) 营业时间: 每天10: 00-21: 00 电话号码: +7 (495) 785-5665

男女衣服/附件
地址: 彼得罗夫卡街, 15/13 1楼 ("库兹涅茨克桥" 地铁站) 营业时间: 每天10: 00-22: 00 电话号码: +7 (495) 625-5476.

欧米茄 (手表/珠宝) 地址: 彼得罗夫卡街, 7 ("库兹涅茨克桥" 地铁站) 营业时间: 每天10: 00-22: 00 电话号码: +7 (495) 933-2808

沛纳海 (手表) 地址: 彼得罗夫卡街, 5 ("库兹涅茨克桥" 地铁站) 营业时间: 每天10: 00-21: 00 电话号码: +7 (495) 662-7576



OMEGA

2016年10月25日在文化遗产古建筑开办了新的第一家欧米茄腕表专卖店, 位于库兹涅茨克桥路7号。这家专卖店成为了全莫斯科第三个, 全俄罗斯第五个欧米茄第一品牌专卖店。
专卖店一共有两层, 面积170平方米。这里所有珍贵的和有意义的收藏品, 有限的收藏品一般跟国际事件有关系。
地址: 莫斯科, 库兹涅茨克桥, 7号 (Kuznetsky Most, 7)
电话号码: +7 495 933 28 08

OMEGA, Ul. Kuznetsky Most, 7, Metro «Kuznetsky Most», Moscow, +7 (495) 933-2808

Spring-Summer 2017 • 春夏2017

23

ОСНОВНЫЕ РАЗДЕЛЫ

MAIN SECTIONS

- Достопримечательности Москвы / Moscow attractions
- Магазины / Shops
- Рестораны / Restaurants
- Карты Москвы / Map of Moscow
- Карта метрополитена / The metro map

ДАТЫ ВЫХОДА / ISSUE DATES

- Весна–Лето '2018 (18 Апрель) / Spring–Summer '2018 (18 April)
- Осень–Зима '2018 (12 Октябрь) / Fall–Winter '2018 (12 October)

ТИРАЖ 30 000 ЭКЗЕМПЛЯРОВ

CIRCULATION 30 000 COPIES

MOSCOW GUIDE

莫斯科游览指南

Tourist Attractions and Shopping
Supplement to Perfect Flight Magazine
PERFECT FLIGHT

游览景点于购物
完美飞行杂志的补充
PERFECT FLIGHT



Spring-Summer 2017 • 春夏2017

MOSCOW GUIDE

莫斯科游览指南

Tourist Attractions and Shopping
Supplement to Perfect Flight Magazine
PERFECT FLIGHT

游览景点于购物
完美飞行杂志的补充
PERFECT FLIGHT



Fall-Winter 2017/2018 • 秋冬2017/2018

MAJOR TOURIST ATTRACTIONS

名胜古迹



The Cathedral of Christ the Savior

Was built in the 1990s, and is a reconstruction of a 19th century cathedral. The cathedral is the collective cenotaph of the soldiers of the Russian Imperial Army, who died in the war with Napoleon. On the walls of the cathedral are inscribed the names of officers who fell in the Patriotic War of 1812 and the Overseas campaigns of 1797-1806 and 1814-1815.

基督救世主大教堂

苏联解体前夕，俄国内正教会接到许多要求重建救世主大教堂的请愿。1990年，在救世主大教堂遗址举行了重建奠基仪式。大教堂是纪念死在拿破仑战争（1812年）与行军时（1797-1806年/1814-1815年）为国捐躯的军官名字。



Poklonnaya Hill

Poklonnaya hill (bow-down hill) is the razed hill in Western part of Moscow located between rivers Setun and Filka. First time it was mentioned in chronicles describing war between Grand Duchy of Moscow and Grand Duchy of Lithuania. On May 9th, 1995 the Victory Park was opened here. It is one of the largest war memorials in Russia and in the world.

俯首山

俯首山位于莫斯科西边行政区，在谢尔河和菲利卡河之间。第一次提到俯首山是在一本叫《贝雅诺夫的编年史》的书里（16世纪）。这本书描述了立陶宛大公国和莫斯科大公国之间的战事。1995年5月9日为了庆祝伟大胜利50周年，在俯首山开办了胜利公园。



Zaryadye Park

Zaryadye Park is the just opened park in the historical centre of Moscow. It is located on the territory with the area of 13 hectares between Kitay-gorodskiy Prospekt, Varsinkina street, Moskoverskaya embankment and connects pedestrian part of Kitay-Gorod with the Kremlin. In the park there were reconstructed four landscape zones of Russia: tundra, steppe, forest and swamp. The zones goes down as terraces from the upper level to the lower level from north-east to south-west, intersects and overlaps. In the park there are Big Hall of Filharmoniy, hotel, historical monuments and museums, including nine churches, archeological site museum.

扎里亚季耶公园

扎里亚季耶公园正式开办于2017年。它位于莫斯科的一个历史区。面积为13公顷，在中国城街、瓦尔瓦里夫卡街、莫斯科列茨基亚沿岸街之间。扎里亚季耶公园连接着中国城街的人行道和克里姆林宫。公园里有俄罗斯的四种地理环境：寒原、草原、森林、湿地。这些景观以凉台形式从地段的南部下来到最底部，从东北下来到西南，相交、层层堆积。



Moscow Zoo

Moscow Zoo was founded in 1864. It is one of the oldest zoos in Europe, forth by area in Russia. It is in Top 10 by number of visitors in the world. It has collection of more than one thousand of animal species with more than 5000 animals. The Zoo is located close to the Garden Ring between Bolshaya Gruzinskaya and Zoological streets. The main entrance is located on the crossroad of Krasnaya Presnya and Bolshaya Gruzinskaya streets, close to Barrikadnaya and Krasnopresnenskaya metro stations.

莫斯科动物园

莫斯科动物园建立于1864年。这是欧洲历史上最悠久的动物园之一。按照面积，在俄罗斯动物园中排名第四。仅次于俄罗斯新西伯利亚动物园、银河号动物园和新西伯利亚动物园之后。莫斯科动物园排名世界公园参观人数前十名。动物园有一千多种动物，五千多种幼植物。动物园位于莫斯科小环线附近，在红普列斯尼亚街、大格鲁吉亚街、动物园街之间。入口在红普列斯尼亚街和大格鲁吉亚街的十字路口，离路地地铁站和克拉斯诺普列斯斯卡尼亚站很近。

РАСПРОСТРАНЕНИЕ /

Hainan Airlines — китайская авиакомпания со штаб-квартирой в Хайкоу (Хайнань) и с хабом в Пекине.

Крупнейшая частная авиакомпания страны, занимающая четвёртое место в Китае по размеру воздушного парка. Входит в конгломерат HNA Group.

Hainan Airlines получила от британского рейтингового агентства Skytrax наивысшую пятизвёздочную оценку, войдя в список из семи авиакомпаний мира с данным баллом 500 рейсов в более чем 90 городов мира.



DISTRIBUTION

Hainan Airlines Company Limited is an airline headquartered in Haikou, Hainan, People's Republic of China with a hub at Beijing Capital International Airport.

It is the largest privately owned air transport company and the fourth-largest airline in terms of fleet size in the People's Republic of China.

It operates scheduled domestic and international services on 500 routes to more than 90 cities of the world.



ОТЕЛИ / HOTELS

- | | | |
|-------------------------|--------------------------|----------------------------|
| ■ Royal Marriott Aurora | ■ Sheraton Sheremetyevo | ■ Mamaison Pokrovka |
| ■ Grand Hotel Marriott | ■ Radisson Royal Ukraine | ■ Design Hotel StandArt |
| ■ Marriott Tverskaya | ■ Radisson Slavyanskaya | ■ The Rooms Boutique Hotel |
| ■ Ararat Park Hyatt | ■ Ritz-Carlton Moscow | ■ Holiday Inn Sokolniki |
| ■ St.Regis Nicolskaya | ■ Four Seasons Moscow | ■ Holiday Inn Sushevskaya |
| ■ Sheraton Palace | ■ Lotte Hotel | ■ Holiday Inn Lesnaya |



MARRIOTT
MOSCOW
ROYAL AURORA



MARRIOTT
MOSCOW GRAND



MARRIOTT
MOSCOW TVERSKAYA

—————
PARK HYATT®
—————



ST. REGIS



Sheraton Palace
HOTEL
MOSCOW



Sheraton
MOSCOW
SHEREMETYEVO AIRPORT
HOTEL

Radisson



Hotel Baltshug
Kempinski
—————
MOSCOW



THE RITZ-CARLTON
MOSCOW



FOUR SEASONS HOTEL
Moscow

РАСЦЕНКИ / PRICE

Специальные позиции / Special positions

4-я страница обложки	Cover 4	295 000
1-й разворот	DPS 1	295 000
2-й разворот	DPS 2	270 000
3-й разворот	DPS 3	250 000
3-я страница обложки	Cover 3	165 000
Разворот	DPS	198 000
1 страница Содержание	1 page TOC	150 000
1 страница	1 page	110 000
1/3 карта Москвы	1/3 page Moscow map	82 500
1/3 карта Метро	1/3 page Metro map	82 500
1/2 страница	1/2 page	55 000

* Все расценки на рекламу даны в рублях без учета НДС (+18%)

*All price rates are indicated in rubles.



1/3 полосы карта Москвы

1/3 page Moscow map



1/3 полосы карта Метро

1/3 page Metro map



MOSCOW GUIDE

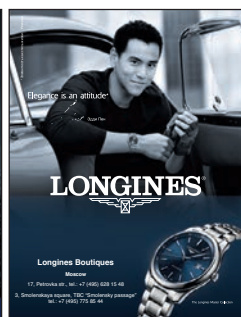
莫斯科游览指南

Tourist Attractions and Shopping
 Supplement to Perfect Flight Magazine
 PERFECT FLIGHT

游览景点于购物
 完美飞行杂志的补充
 PERFECT FLIGHT



OUR ADVERTISERS



КОНТАКТЫ

ИД СК ПРЕСС

Тел.: +7 (495) 974-2260 / 2262

Факс +7 (495) 974-2263

Email: ad@vpolet.ru

Сайт: www.vpolet.ru

109147 Москва

Марксистская ул., 34/10

CONTACTS

SK PRESS Publishing House

Phone.: +7 (495) 974-2260 / 2262

Fax +7 (495) 974-2263

Email: ad@vpolet.ru

Website: www.vpolet.ru

109147 Moscow

Marksistskaya st., 34/10